



**SAN ANTONIO WATER SYSTEM
CENTRAL SEWERSHED PACKAGE 3**

**SAWS Job No. 17-4528
SAWS Solicitation No. CO-00139**

**ADDENDUM NO. 1
September 27, 2017**

To Bidder of Record:

This addendum, applicable to work referenced above, is an amendment to the bidding documents and as such will be a part of and included in the Contract Documents. Acknowledge receipt of this addendum by entering the addendum number and issue date in the space provided in the bid proposal.

Clarifications:

1. The estimated cost for this project is \$6,082,530.40, which is now reflected on the SAWS website at the following link:
https://saws.org/business_center/ContractSol/Drill.cfm?id=2017&View=Yes
2. The bid items in the bid proposal have been updated, revised, or removed as follows:

Quantities Updated

205.4	Hot Mix Asphaltic Concrete Pavement, Type D (2" Compacted Depth) (COSA Spec)	
	SY	8,202
205.4	Hot Mix Asphaltic Concrete Pavement, Type D (1" Compacted Depth) (COSA Spec)	
	SY	1,718
1103.1	Point repairs for 8" or 10" Diameter, (0'-10' depth) including up to 20 LF of piping	
	EA	95
1103.3	Obstruction Removal by Excavation, 8" or 10" Diameter, All Depths	
	EA	45

Item Descriptions Revised

1103.4	Obstruction Removal by Remote Control, 8" or 10" Diameter, all depths	EA 5
1103.4	Obstruction Removal by Remote Control, 12" or 15" Diameter, all depths	EA 5
1103.4	Obstruction Removal by Remote Control, 18" or 20" Diameter, all depths	EA 5

Items Removed

900	Pipe Bursting 20" Sanitary Sewer Pipe, 0'-10' deep	LF 50
900	Pipe Bursting 20" Sanitary Sewer Pipe, 10'-15' deep	LF 50
900	Pipe Bursting 20" Sanitary Sewer Pipe, >15' deep	LF 50
901	Conventional CIPP 20" Sanitary Sewer Pipe, all depths	LF 50

Bidding Documents:

1. Remove the Bid Proposal (BP-1 thru BP-5) in its entirety and replace with the version, which is attached to this Addendum. This version should be used when submitting a bid proposal for this project.

Modifications to the Plans:

1. Remove Sheet 3 in its entirety and replace with the attached Sheet 3.
2. Insert Sheet 70 which was missing when the plans were originally released and is attached to this Addendum.
3. There are two Sheet 71's in the Plan Set. Omit the 2nd Plan Sheet 71 which shows (4) Item Descriptions in the Quantities Table. The 1st Plan Sheet 71 showing (5) Item Descriptions in the Quantities Table should be used when submitting a bid proposal for this project.

Questions and Answers:

1. Question: Is there an estimate available for this project?

Response: See No. 1 of Clarifications within this Addendum.

2. I am trying to confirm that all of the updated info will be posted to the saws.org website. I am also trying to confirm that estimated project values are not available.

Response: All of the updated information will be posted to the saws.org website. Also, see response to Question No. 1.

3. I have a question as to whether or not SAWS will be accepting alternative bids to conduct the work for this RFP? After our initial review of the project requirements, we are inclined to think that CIPP may be a more cost-effective and timely application versus pipe bursting. As such, may a contractor propose to execute all of the work using CIPP?

Response: SAWS will not accept alternative bids to this IFB. This project is designed to be rehabilitated by a combination of CIPP and Pipe Bursting.

4. Regarding the Statement of Bidder's Experience. Is the Bidder permitted to subcontract the CIPP installations on the project and therefore list the project experience of the CIPP installer the Bidder intends to use?

Response: Yes, the contractor can subcontract the CIPP installation and use its subcontractor's project experience.

5. Can SAWS provide flow rates for the proposed lines to be rehabbed? Many of the manholes are not accessible for contractor inspection.

Response: SAWS does not have flow rates for the sanitary sewer lines. Most of the manholes are accessible.

6. Is it possible for SAWS to replace bypass pay items for each work site and change the pay items to each set up of every diameter? This would allow for a more competitive bid.

Response: No, the project bypass specification was intended to be bid per Work Site and will not be changed.

7. If previous question is not possible, can SAWS break up the bypass pay items per area instead of per work site?

Response: No, the project bypass specification was intended to be bid per Work Site and will not be changed.

8. Will SAWS require an engineer stamped bypass plan for every line segment of this project?

Response: SAWS will follow the most recent By-Pass Specification. All requirements should be submitted and accepted by SAWS. Contractor may submit the by-pass pump plan as a package.

This Addendum is ten (10) pages in its entirety, including attachments.

Attachments: Bid Proposal (Pages BP-1 thru BP-5)
Sheet 3 of 132
Sheet 70 of 132



Carl Bain, P.E.
Bain Medina Bain, Inc.
TBPE Registration No: F-1712



END OF ADDENDUM NO. 1

BID PROPOSAL

PROPOSAL OF _____, a corporation

a partnership consisting of

an individual doing business as

THE SAN ANTONIO WATER SYSTEM:

Pursuant to Instructions and Invitation to Bidders, the undersigned proposes to furnish all labor and materials as specified and perform the work required for the project as specified, in accordance with the Plans and Specifications for the following prices to wit:

(PLEASE SEE ATTACHED PDF LIST OF BID ITEMS)

TOTAL BID PRICE

\$ _____

Mobilization and Prep of ROW shall be limited to the maximum percentage shown. **If the percentage exceeds the allowable maximum stated for mobilization and or preparation of ROW, SAWS reserves the right to cap the amount at the percentages shown and adjust the extensions of the bid items accordingly.**

BIDDER'S SIGNATURE & TITLE

FIRM'S NAME (TYPE OR PRINT)

FIRM'S ADDRESS

FIRM'S PHONE NO. /FAX NO.

FIRM'S EMAIL ADDRESS

The Contractor herein acknowledges receipt of the following:
Addendum Nos. _____

OWNER RESERVES THE RIGHT TO ACCEPT THE OVERALL MOST RESPONSIBLE BID.

BID

The bidder offers to construct the Project in accordance with the Contract Documents for the contract price, and to complete the Project within **500** calendar days after the start date, as set forth in the Authorization to Proceed. **The bidder understands and accepts the provisions of the contract Documents relating to liquidated damages of the project if not completed on time.**

Complete the additional requirements of the Bid Proposal which are included on the following pages.



Solicitation No.: CO – 00139
 SAWS Job #: 17-4528
 Bid Proposal: Central Sewershed
 Package 3

Item No.	Spec No.	Specification No. & Description	Unit	Qty	Unit Price	Total Price
1	103.1	Remove Concrete Curb (COSA Spec)	LF	10	\$	\$
2	103.3	Remove Concrete Sidewalks and Driveways (COSA Spec)	SF	729	\$	\$
3	103.4	Remove Miscellaneous Concrete (COSA Spec)	SF	50	\$	\$
4	203.1	Tack coat (COSA Spec)	GAL	1,607	\$	\$
5	205.3	Hot Mix Asphaltic Concrete Pavement, Type C (3" Compacted Depth) (COSA Spec)	SY	7,879	\$	\$
6	205.4	Hot Mix Asphaltic Concrete Pavement, Type D (2" Compacted Depth) (COSA Spec)	SY	8,202	\$	\$
7	205.4	Hot Mix Asphaltic Concrete Pavement, Type D (1" Compacted Depth) (COSA Spec)	SY	1,718	\$	\$
8	206.1	Asphalt Treated Base (ATB) (10" Compacted Depth) (COSA Spec)	SY	957	\$	\$
9	206.1	Asphalt Treated Base (ATB) (12" Compacted Depth) (COSA Spec)	SY	121	\$	\$
10	208.1	Salvaging Hauling & Stockpiling Reclaimable Asphaltic Pavement(2" Depth) (COSA Spec)	SY	7,627	\$	\$
11	208.2	Salvaging Hauling & Stockpiling Reclaimable Asphaltic Pavement(3" Depth) (COSA Spec)	SY	7,779	\$	\$
12	413	Flowable Fill	CY	27	\$	\$
13	500.1	Concrete Curb (COSA Spec)	LF	10	\$	\$
14	502.1	Concrete Sidewalks (COSA Spec)	SY	9	\$	\$
15	503.1	Portland Cement Concrete Driveway (COSA Spec)	SY	24	\$	\$
16	503.2	Portland Cement Concrete Driveway - Commercial (COSA Spec)	SY	48	\$	\$
17	505.1	Concrete Riprap (5" Thick) (COSA Spec)	SY	10	\$	\$
18	515.1	Topsoil (COSA SPEC)	CY	15	\$	\$
19	516.1	Bermuda Sodding (COSA SPEC)	SY	47	\$	\$
20	516.2	St. Augustine Sodding (COSA SPEC)	SY	119	\$	\$
21	530.1	Barricades, Signs, and Traffic Handling (COSA Spec) (Work Site 01)	LS	1	\$	\$
22	530.1	Barricades, Signs, and Traffic Handling (COSA Spec) (Work Site 02)	LS	1	\$	\$
23	530.1	Barricades, Signs, and Traffic Handling (COSA Spec) (Work Site 03)	LS	1	\$	\$
24	530.1	Barricades, Signs, and Traffic Handling (COSA Spec) (Work Site 04)	LS	1	\$	\$
25	535.1	4 Inch Wide Yellow Line (COSA Spec)	LF	4,515	\$	\$
26	535.12	Word "ONLY"	EA	3	\$	\$
27	535.2	4 Inch Wide White Line (COSA Spec)	LF	1,350	\$	\$
28	535.22	Median Nose Yellow	EA	3	\$	\$
29	535.5	12 Inch Wide White Line (COSA Spec)	LF	970	\$	\$



Solicitation No.: CO – 00139
 SAWS Job #: 17-4528
 Bid Proposal: Central Sewershed
 Package 3

Item No.	Spec No.	Specification No. & Description	Unit	Qty	Unit Price	Total Price
30	535.7	24 Inch Wide White Line (COSA Spec)	LF	180	\$	\$
31	535.13	Straight White Arrow (COSA Spec)	EA	1	\$	\$
32	535.23	24 Inch Wide Yellow Line (COSA Spec)	LF	130	\$	\$
33	535.8	Right White Arrow (COSA Spec)	EA	3	\$	\$
34	851	Adjusting Existing Manholes	EA	118	\$	\$
35	852	Sanitary Sewer Manhole (0'-6' depth)	EA	26	\$	\$
36	852	Extra Depth Manholes (greater than 6')	VF	25	\$	\$
37	855	Reconstruction of Existing Manhole	EA	5	\$	\$
38	864-S1	Bypass Pumping (All Sizes) (Work Site 01)	LS	1	\$	\$
39	864-S1	Bypass Pumping (All Sizes) (Work Site 02)	LS	1	\$	\$
40	864-S1	Bypass Pumping (All Sizes) (Work Site 03)	LS	1	\$	\$
41	864-S1	Bypass Pumping (All Sizes) (Work Site 04)	LS	1	\$	\$
42	866	Sewer Main Pre-Television Inspection (8" through 15" Diameter)	LF	27,011	\$	\$
43	866	Sewer Main Pre-Television Inspection (18" through 21" Diameter)	LF	536	\$	\$
44	900	Pipe Bursting 8" Sanitary Sewer Pipe, 0'-10' deep	LF	18,724	\$	\$
45	900	Pipe Bursting 8" Sanitary Sewer Pipe, 10'-15' deep	LF	817	\$	\$
46	900	Pipe Bursting 8" Sanitary Sewer Pipe, >15' deep	LF	50	\$	\$
47	900	Pipe Bursting 10" Sanitary Sewer Pipe, 0'-10' deep	LF	474	\$	\$
48	900	Pipe Bursting 10" Sanitary Sewer Pipe, 10'-15' deep	LF	50	\$	\$
49	900	Pipe Bursting 10" Sanitary Sewer Pipe, >15' deep	LF	50	\$	\$
50	900	Pipe Bursting 12" Sanitary Sewer Pipe, 0'-10' deep	LF	50	\$	\$
51	900	Pipe Bursting 12" Sanitary Sewer Pipe, 10'-15' deep	LF	50	\$	\$
52	900	Pipe Bursting 12" Sanitary Sewer Pipe, >15' deep	LF	50	\$	\$
53	900	Pipe Bursting 15" Sanitary Sewer Pipe, 0'-10' deep	LF	400	\$	\$
54	900	Pipe Bursting 15" Sanitary Sewer Pipe, 10'-15' deep	LF	249	\$	\$
55	900	Pipe Bursting 15" Sanitary Sewer Pipe, >15' deep	LF	781	\$	\$
56	900	Pipe Bursting 18" Sanitary Sewer Pipe, 0'-10' deep	LF	50	\$	\$
57	900	Pipe Bursting 18" Sanitary Sewer Pipe, 10'-15' deep	LF	271	\$	\$
58	900	Pipe Bursting 18" Sanitary Sewer Pipe, >15' deep	LF	265	\$	\$
59	901	Conventional CIPP 8" Sanitary Sewer Pipe, all depths	LF	4,259	\$	\$
60	901	Conventional CIPP 10" Sanitary Sewer Pipe, all depths	LF	351	\$	\$



Solicitation No.: CO – 00139
 SAWS Job #: 17-4528
 Bid Proposal: Central Sewershed
 Package 3

Item No.	Spec No.	Specification No. & Description	Unit	Qty	Unit Price	Total Price
61	901	Conventional CIPP 12" Sanitary Sewer Pipe, all depths	LF	956	\$	\$
62	901	Conventional CIPP 15" Sanitary Sewer Pipe, all depths	LF	50	\$	\$
63	901	Conventional CIPP 18" Sanitary Sewer Pipe, all depths	LF	50	\$	\$
64	910	Manhole Rehabilitation	VF	358	\$	\$
65	1103.1	Point repairs for 8" or 10" Diameter, (0'-10' depth) including up to 20 LF of piping	EA	95	\$	\$
66	1103.1	Point repairs for 8" or 10" Diameter, (10'-15' depth) including up to 20 LF of piping	EA	1	\$	\$
67	1103.1	Point repairs for 8" or 10" Diameter, (>15' depth) including up to 20 LF of piping	EA	2	\$	\$
68	1103.1	Point repairs for 12" or 15" Diameter, (0'-10' depth) including up to 20 LF of piping	EA	2	\$	\$
69	1103.1	Point repairs for 12" or 15" Diameter, (10'-15' depth) including up to 20 LF of piping	EA	2	\$	\$
70	1103.1	Point repairs for 12" or 15" Diameter, (>15' depth) including up to 20 LF of piping	EA	4	\$	\$
71	1103.1	Point repairs for 18" or 21" Diameter, (0'-10' depth) including up to 20 LF of piping	EA	2	\$	\$
72	1103.1	Point repairs for 18" or 21" Diameter, (10'-15' depth) including up to 20 LF of piping	EA	2	\$	\$
73	1103.1	Point repairs for 18" or 21" Diameter, (>15' depth) including up to 20 LF of piping	EA	2	\$	\$
74	1103.2	Extra length point repair, 8" or 10" Diameter, all depths	LF	261	\$	\$
75	1103.2	Extra length point repair, 12" or 15" Diameter, all depths	LF	20	\$	\$
76	1103.2	Extra length point repair, 18" or 21" Diameter, all depths	LF	20	\$	\$
77	1103.3	Obstruction Removal by Excavation, 8" or 10" Diameter, All Depths	EA	45	\$	\$
78	1103.3	Obstruction Removal by Excavation, 12" or 15" Diameter, All Depths	EA	1	\$	\$
79	1103.3	Obstruction Removal by Excavation, 18" or 21" Diameter, All Depths	EA	1	\$	\$
80	1103.4	Obstruction Removal by Remote Control, 8" or 10" Diameter, all depths	EA	5	\$	\$
81	1103.4	Obstruction Removal by Remote Control, 12" or 15" Diameter, all depths	EA	5	\$	\$
82	1103.4	Obstruction Removal by Remote Control, 18" or 20" Diameter, all depths	EA	5	\$	\$
83	1109	Service Reconnection, (w/ open cut excavation, 0'-10' depth, including up to 10 LF of lateral)	EA	487	\$	\$



Solicitation No.: CO – 00139

SAWS Job #: 17-4528

Bid Proposal: Central Sewershed

Package 3

Item No.	Spec No.	Specification No. & Description	Unit	Qty	Unit Price	Total Price
84	1109	Service Reconnection, (w/ open cut excavation, 10'-15' depth, including up to 10 LF of lateral)	EA	19	\$	\$
85	1109	Service Reconnection, (w/ open cut excavation, >15' depth, including up to 10 LF of lateral)	EA	2	\$	\$
86	1109	Service Reconnection, all depths (w/ remote control cut device)	EA	137	\$	\$

2:55:01 PM

9/21/2017

W:\Work_C-1456-01-Central Sewer Shed_Pkg_3\SANS_Sheets\CentralPackage3_SWR03_Quantities.dgn

Line No	Item No	Item Description	Unit	Quantity
1	103.1	Remove Concrete Curb (COSA Spec)	LF	10
2	103.3	Remove Concrete Sidewalks and Driveways (COSA Spec)	SF	729
3	103.4	Remove Miscellaneous Concrete (COSA Spec)	SF	50
4	203.1	Tack coat (COSA Spec)	GAL	1,607
5	205.3	Hot Mix Asphaltic Concrete Pavement, Type C (3" Compacted Depth) (COSA Spec)	SY	7,879
6	205.4	Hot Mix Asphaltic Concrete Pavement, Type D (2" Compacted Depth) (COSA Spec)	SY	8,202
7	205.4	Hot Mix Asphaltic Concrete Pavement, Type D (1" Compacted Depth) (COSA Spec)	SY	1,718
8	206.1	Asphalt Treated Base (ATB) (10" Compacted Depth) (COSA Spec)	SY	957
9	206.1	Asphalt Treated Base (ATB) (12" Compacted Depth) (COSA Spec)	SY	121
10	208.1	Salvaging Hauling & Stockpiling Reclaimable Asphaltic Pavement(2" Depth) (COSA Spec)	SY	7,627
11	208.2	Salvaging Hauling & Stockpiling Reclaimable Asphaltic Pavement(3" Depth) (COSA Spec)	SY	7,779
12	413	Flowable Fill	CY	27
13	500.1	Concrete Curb (COSA Spec)	LF	10
14	502.1	Concrete Sidewalks (COSA Spec)	SY	9
15	503.1	Portland Cement Concrete Driveway (COSA Spec)	SY	24
16	503.2	Portland Cement Concrete Driveway - Commercial (COSA Spec)	SY	48
17	505.1	Concrete Riprap (5" Thick) (COSA Spec)	SY	10
18	515.1	Topsoil (COSA SPEC)	CY	15
19	516.1	Bermuda Sodding (COSA SPEC)	SY	47
20	516.2	St. Augustine Sodding (COSA SPEC)	SY	119
21	530.1	Barricades, Signs, and Traffic Handling (COSA Spec) (Work Site 01)	LS	1
22	530.1	Barricades, Signs, and Traffic Handling (COSA Spec) (Work Site 02)	LS	1
23	530.1	Barricades, Signs, and Traffic Handling (COSA Spec) (Work Site 03)	LS	1
24	530.1	Barricades, Signs, and Traffic Handling (COSA Spec) (Work Site 04)	LS	1
25	535.1	4 Inch Wide Yellow Line (COSA Spec)	LF	4,515
26	535.12	Word "ONLY"	EA	3
27	535.2	4 Inch Wide White Line (COSA Spec)	LF	1,350
28	535.22	Median Nose Yellow	EA	3
29	535.5	12 Inch Wide White Line (COSA Spec)	LF	970
30	535.7	24 Inch Wide White Line (COSA Spec)	LF	180
31	535.13	Straight White Arrow (COSA Spec)	EA	1
32	535.23	24 Inch Wide Yellow Line (COSA Spec)	LF	130
33	535.8	Right White Arrow (COSA Spec)	EA	3
34	851	Adjusting Existing Manholes	EA	118
35	852	Sanitary Sewer Manhole (0'-6' depth)	EA	26
36	852	Extra Depth Manholes (greater than 6')	VF	25
37	855	Reconstruction of Existing Manhole	EA	5
38	864-S1	Bypass Pumping (All Sizes) (Work Site 01)	LS	1
39	864-S1	Bypass Pumping (All Sizes) (Work Site 02)	LS	1
40	864-S1	Bypass Pumping (All Sizes) (Work Site 03)	LS	1
41	864-S1	Bypass Pumping (All Sizes) (Work Site 04)	LS	1
42	866	Sewer Main Pre-Television Inspection (8" through 15" Diameter)	LF	27,011
43	866	Sewer Main Pre-Television Inspection (18" through 21" Diameter)	LF	536
44	900	Pipe Bursting 8" Sanitary Sewer Pipe, 0'-10' deep	LF	18,724
45	900	Pipe Bursting 8" Sanitary Sewer Pipe, 10'-15' deep	LF	817
46	900	Pipe Bursting 8" Sanitary Sewer Pipe, >15' deep	LF	50
47	900	Pipe Bursting 10" Sanitary Sewer Pipe, 0'-10' deep	LF	474
48	900	Pipe Bursting 10" Sanitary Sewer Pipe, 10'-15' deep	LF	50
49	900	Pipe Bursting 10" Sanitary Sewer Pipe, >15' deep	LF	50
50	900	Pipe Bursting 12" Sanitary Sewer Pipe, 0'-10' deep	LF	50


Line No	Item No	Item Description	Unit	Quantity
51	900	Pipe Bursting 12" Sanitary Sewer Pipe, 10'-15' deep	LF	50
52	900	Pipe Bursting 12" Sanitary Sewer Pipe, >15' deep	LF	50
53	900	Pipe Bursting 15" Sanitary Sewer Pipe, 0'-10' deep	LF	400
54	900	Pipe Bursting 15" Sanitary Sewer Pipe, 10'-15' deep	LF	249
55	900	Pipe Bursting 15" Sanitary Sewer Pipe, >15' deep	LF	781
56	900	Pipe Bursting 18" Sanitary Sewer Pipe, 0'-10' deep	LF	50
57	900	Pipe Bursting 18" Sanitary Sewer Pipe, 10'-15' deep	LF	271
58	900	Pipe Bursting 18" Sanitary Sewer Pipe, >15' deep	LF	265
59	901	Conventional CIPP 8" Sanitary Sewer Pipe, all depths	LF	4,259
60	901	Conventional CIPP 10" Sanitary Sewer Pipe, all depths	LF	351
61	901	Conventional CIPP 12" Sanitary Sewer Pipe, all depths	LF	956
62	901	Conventional CIPP 15" Sanitary Sewer Pipe, all depths	LF	50
63	901	Conventional CIPP 18" Sanitary Sewer Pipe, all depths	LF	50
64	910	Manhole Rehabilitation	VF	358
65	1103.1	Point repairs for 8" or 10" Diameter, (0'-10' depth) including up to 20 LF of piping	EA	95
66	1103.1	Point repairs for 8" or 10" Diameter, (10'-15' depth) including up to 20 LF of piping	EA	1
67	1103.1	Point repairs for 8" or 10" Diameter, (>15' depth) including up to 20 LF of piping	EA	2
68	1103.1	Point repairs for 12" or 15" Diameter, (0'-10' depth) including up to 20 LF of piping	EA	2
69	1103.1	Point repairs for 12" or 15" Diameter, (10'-15' depth) including up to 20 LF of piping	EA	2
70	1103.1	Point repairs for 12" or 15" Diameter, (>15' depth) including up to 20 LF of piping	EA	4
71	1103.1	Point repairs for 18" or 21" Diameter, (0'-10' depth) including up to 20 LF of piping	EA	2
72	1103.1	Point repairs for 18" or 21" Diameter, (10'-15' depth) including up to 20 LF of piping	EA	2
73	1103.1	Point repairs for 18" or 21" Diameter, (>15' depth) including up to 20 LF of piping	EA	2
74	1103.2	Extra length point repair, 8" or 10" Diameter, all depths	LF	261
75	1103.2	Extra length point repair, 12" or 15" Diameter, all depths	LF	20
76	1103.2	Extra length point repair, 18" or 21" Diameter, all depths	LF	20
77	1103.3	Obstruction Removal by Excavation, 8" or 10" Diameter, All Depths	EA	45
78	1103.3	Obstruction Removal by Excavation, 12" or 15" Diameter, All Depths	EA	1
79	1103.3	Obstruction Removal by Excavation, 18" or 21" Diameter, All Depths	EA	1
80	1103.4	Obstruction Removal by Remote Control, 8" or 10" Diameter, all depths	EA	5
81	1103.4	Obstruction Removal by Remote Control, 12" or 15" Diameter, all depths	EA	5
82	1103.4	Obstruction Removal by Remote Control, 18" or 20" Diameter, all depths	EA	5
83	1109	Service Reconnection, (w/ open cut excavation, 0'-10' depth, including up to 10 LF of lateral)	EA	487
84	1109	Service Reconnection, (w/ open cut excavation, 10'-15' depth, including up to 10 LF of lateral)	EA	19
85	1109	Service Reconnection, (w/ open cut excavation, >15' depth, including up to 10 LF of lateral)	EA	2
86	1109	Service Reconnection, all depths (w/ remote control cut device)	EA	137




The seal appearing on this document was authorized by
 CARL BAIN
 P.E. 56996 ON
 9/13/2017

THIS DRAWING IS THE PROPERTY OF BAIN MEDINA BAIN, INC. AND SHALL NOT BE USED FOR ANY PURPOSE WITHOUT THE WRITTEN CONSENT OF AN AUTHORIZED AGENT OF BAIN MEDINA BAIN, INC. BAIN MEDINA BAIN, INC. ACCEPTS NO RESPONSIBILITY FOR THE USE OF THIS DRAWING FOR ANY PURPOSE AFTER SIX MONTHS FROM THE DATE INDICATED ON THE DRAWING. ALL RIGHTS RESERVED. COPYRIGHT 2014, BAIN MEDINA BAIN, INC. ©

REV.	DATE	DESCRIPTION	BY



BAIN MEDINA BAIN, INC.
 ENGINEERS & SURVEYORS
 7BPE F-001712
 7073 San Pedro, San Antonio, Texas, 78216
 Phone: 210-494-7223 Fax: 210-490-5120 WWW.BMBI.COM



CENTRAL SEWERSHED PACKAGE 3

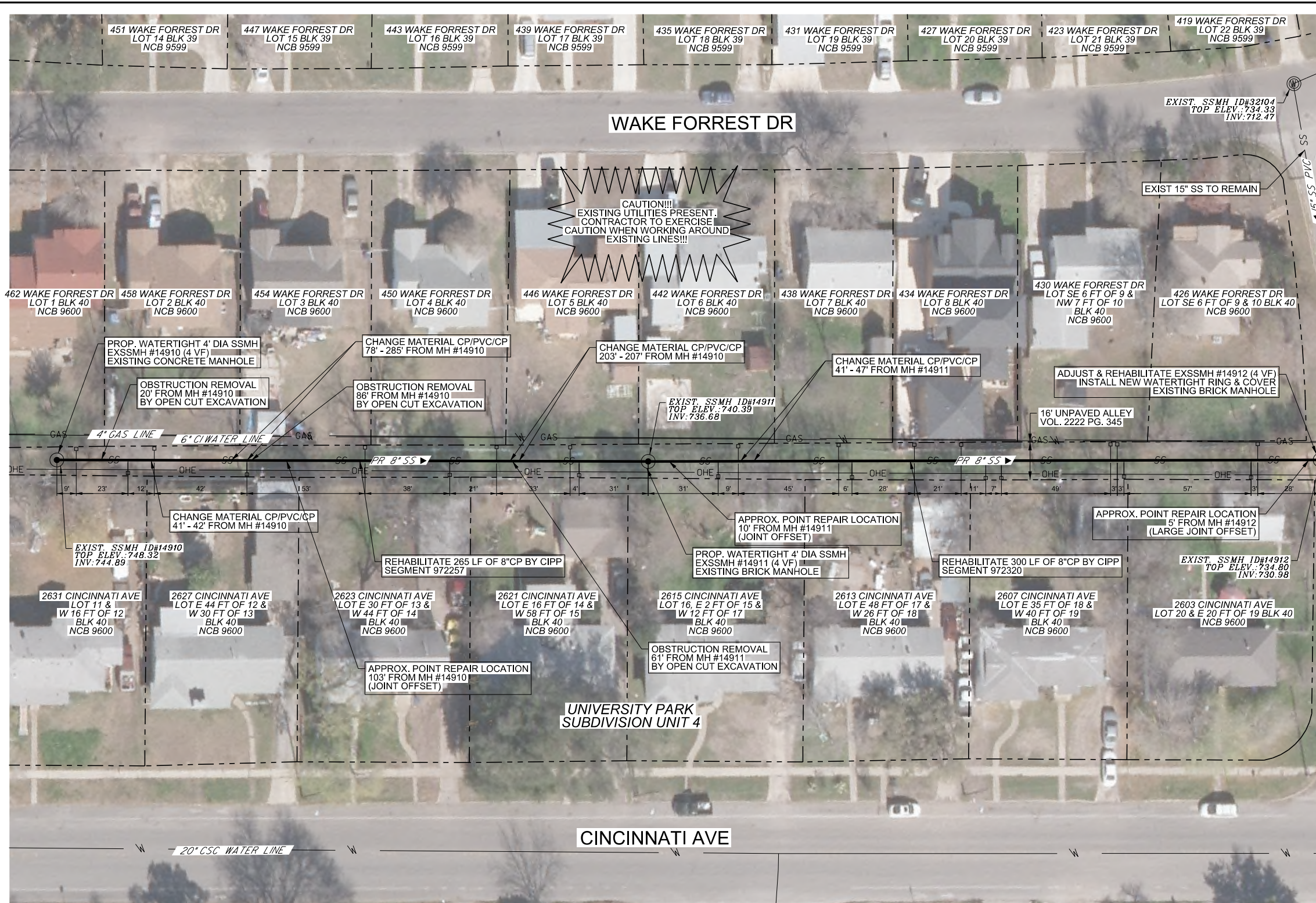
SUMMARY OF QUANTITIES

DEVELOPER:		BUDGET PROJ.	
CONT.			
SUBMITTED			
APPROVED			
MAP No.		SHEET	
SECT. No.		FINAL DESIGN	3
DR. DC	CK. CC/CB	JOB No. 17-4528	OF 132

4:55:57 PM

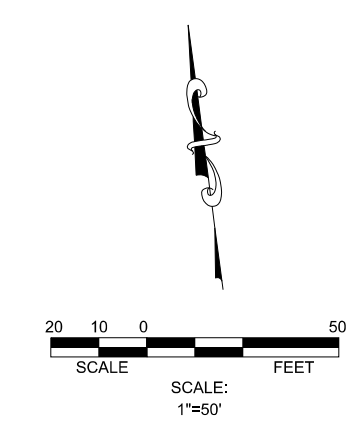
9/2/2017

W:\Work\C-1456\01 Central Sewer Shed Pkg 3\SAWS Sheets\PLN AY28_Centr alPackage_03_04.dgn



MATCHLINE (SEE SHEET 71)

ITEM NO.	SEWER ITEM DESCRIPTION	QUANTITY	UNIT
851	Adjusting Existing Manholes	1	EA
852	Sanitary Sewer Manhole (0'-6" depth)	2	EA
866	Sewer Main Pre-Television Inspection (8" through 15" Diameter)	565	LF
901	Conventional CIPP 8" Sanitary Sewer Pipe, all depths	565	LF
910	Manhole Rehabilitation	4	VF
1103.1	Point repairs for 8" or 10" Diameter, (0'-10' depth) including up to 20 LF of piping	3	EA
1103.3	Obstruction Removal by Excavation, 8" or 10" Diameter, All Depths	3	EA
1109	Service Reconnection, all depths (w/ remote control cut device)	22	EA



LEGEND

PROP. SAN SEWER	
EXISTING SAN. SEWER	
WATER MAIN	
GAS MAIN	
STORM SEWER	
EXISTING UTILITY POLE	
UNDERGROUND ELEC.	
UNDERGROUND TELE.	
PVMT SDLK & DRWY REPAIR	
SODDING & LANDSCAPE REPAIR	

STATE OF TEXAS

CARL BAIN

56996

REGISTERED PROFESSIONAL ENGINEER

The seal appearing on this document was authorized by
 CARL BAIN
 P.E. 56996 ON
 9/13/2017

PROP 8" CIPP
SEGMENT 972257- 265 LF.
SEGMENT 972320- 300 L.F.

SEWER LATERAL NOTE:
 SEWER LATERAL PLACEMENTS WERE BASED ON PRE-TELEVISION INSPECTION AND SAWS BLOCK MAPS. THE CONTRACTOR IS RESPONSIBLE FOR THE VERIFICATION OF THE SEWER LATERAL LOCATIONS AND EXISTING UTILITIES, BEFORE CONSTRUCTION BEGINS.

NOTE:
 THE EXISTING UNDERGROUND UTILITIES SHOWN ON THESE PLANS ARE BASED UPON RECORD INFORMATION ONLY AND ARE APPROXIMATE. THE EXACT LOCATION OF ALL EXISTING UNDERGROUND UTILITIES SHALL BE FIELD VERIFIED BY THE CONTRACTOR. THE CONTRACTOR SHALL ALSO CONTACT THE UTILITY PURVEYORS BEFORE BEGINNING WORK. CONTRACTOR SHALL TAKE FULL RESPONSIBILITY FOR ALL AND ANY DAMAGES THAT MIGHT OCCUR BY HIS FAILURE TO ACCURATELY LOCATE ALL EXISTING UNDERGROUND UTILITIES AND PRESERVE EXISTING CONDITIONS.

TRENCH EXCAVATION SAFETY PROTECTION
 CONTRACTOR AND/OR CONTRACTOR'S INDEPENDENTLY RETAINED EMPLOYEE OR STRUCTURAL DESIGN/GEOTECHNICAL/SAFETY/ EQUIPMENT CONSULTANT, IF ANY SHALL REVIEW THESE PLANS AND AVAILABLE GEOTECHNICAL INFORMATION AND THE ANTICIPATED INSTALLATION SITE(S) WITHIN THE PROJECT WORK AREA IN ORDER TO IMPLEMENT CONTRACTOR'S TRENCH EXCAVATION SAFETY PROTECTION SYSTEMS, PROGRAMS AND/OR PROCEDURES. THE CONTRACTOR'S IMPLEMENTATION OF THE SYSTEMS, PROGRAMS AND/OR PROCEDURES SHALL PROVIDE FOR ADEQUATE TRENCH EXCAVATION SAFETY PROTECTION THAT COMPLIES WITH AS A MINIMUM, OSHA STANDARDS FOR TRENCH EXCAVATIONS. SPECIFICALLY, CONTRACTOR AND/OR CONTRACTOR'S INDEPENDENTLY RETAINED EMPLOYEE OF SAFETY CONSULTANT SHALL IMPLEMENT A TRENCH SAFETY PROGRAM IN ACCORDANCE WITH OSHA STANDARDS GOVERNING THE PRESENCE AND ACTIVITIES OF INDIVIDUALS WORKING IN AND AROUND TRENCH EXCAVATION.

- CONTRACTOR TO COORDINATE WITH SAWS INSPECTOR AND COSA TREE ARBORIST FOR TREE PROTECTION REQUIREMENTS
- CONTRACTOR MUST NOTIFY SAWS INSPECTION AT 233-3500 48 HOURS BEFORE ANY OF THE FOLLOWING ACTIVITIES TAKE PLACE.
1. NOTIFICATION OF PRE-TELEVISION INSPECTION.
 2. NOTIFICATION OF BYPASS PUMPING SETUP OPERATIONS.
 3. NOTIFICATION OF THE PIPE INSTALLATION.
- NOTE: CONTRACTOR MUST FIELD VERIFY ALL DEPTHS, DISTANCES, PIPE, SIZES, AND GRADES BEFORE START OF CONSTRUCTION. (N.S.P.I.)

THIS DRAWING IS THE PROPERTY OF BAIN MEDINA BAIN, INC. AND SHALL NOT BE USED FOR ANY PURPOSE WITHOUT THE WRITTEN CONSENT OF AN AUTHORIZED AGENT OF BAIN MEDINA BAIN, INC. BAIN MEDINA BAIN, INC. ACCEPTS NO RESPONSIBILITY FOR THE USE OF THIS DRAWING FOR ANY PURPOSE AFTER SIX MONTHS FROM THE DATE INDICATED ON THE DRAWING. ALL RIGHTS RESERVED. COPYRIGHT 2014. BAIN MEDINA BAIN, INC. ©

REV.	DATE	DESCRIPTION	BY

BAIN MEDINA BAIN, INC.
 ENGINEERS & SURVEYORS
 7878 F-001712
 7073 San Pedro, San Antonio, Texas, 78216
 Phone: 210-494-7223 Fax: 210-490-5120 WWW.BMBL.COM

CENTRAL SEWERSHED PACKAGE 3
PLAN VIEW - AREA AY28
SEGMENT 972257 & 972320
WORK SITE 03

DEVELOPER: _____

CONT. _____ BUDGET PROJ. _____

SUBMITTED _____

APPROVED _____

MAP No.	FINAL DESIGN	SHEET
SECT. No.	JOB No. 17-4528	70
DR. DC	CK. CC/CB	OF 132